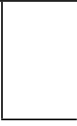
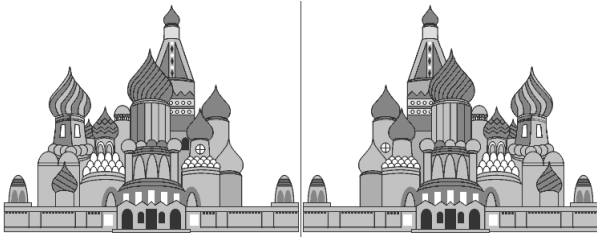
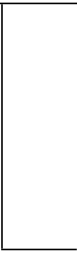
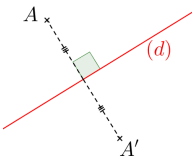
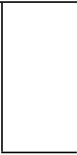
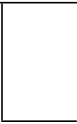


I. Figures symétriques :**Définition 1**

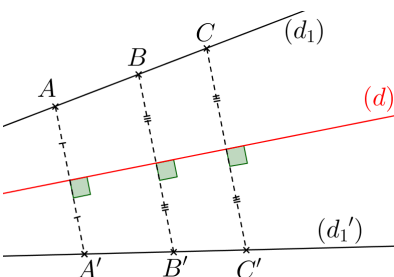
Exemple :

**II. Points symétriques :****Définition 2**

Exemple :

**III. Propriétés de la symétrie axiale :****Proposition 1****Proposition 2**

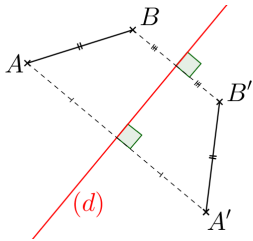
Exemple :



Proposition 3



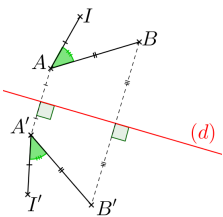
Exemple :



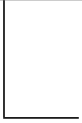
Proposition 4



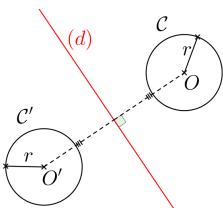
Exemple :



Proposition 5



Exemple :

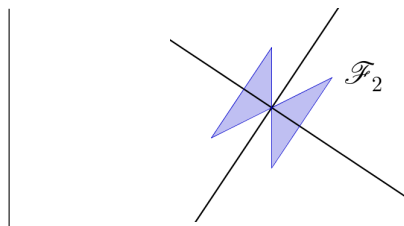
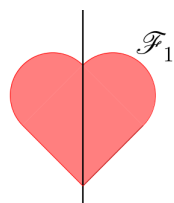


IV. Axe de symétrie d'une figure :

Définition 3



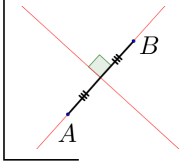
Exemples :



V. Axes de symétrie des figures usuelles :

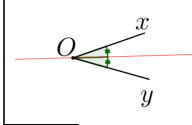
1. Segment :

Proposition 6



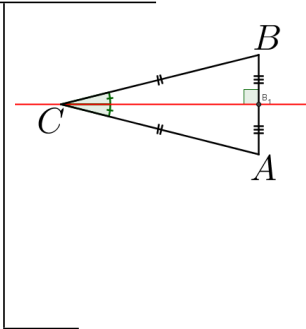
2. Angle :

Proposition 7



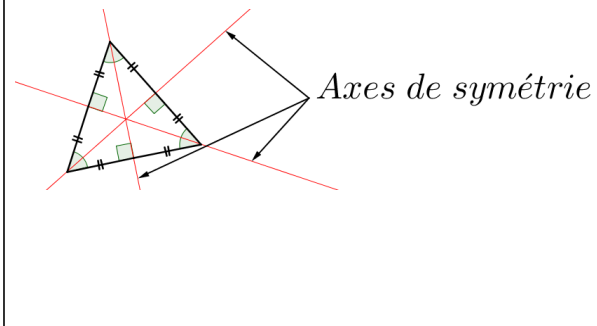
3. Triangle isocèle :

Proposition 8



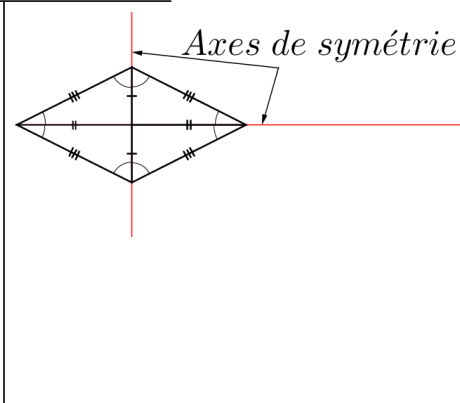
4. Triangle équilatéral :

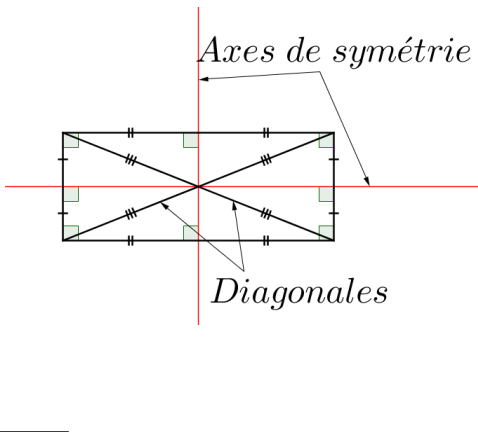
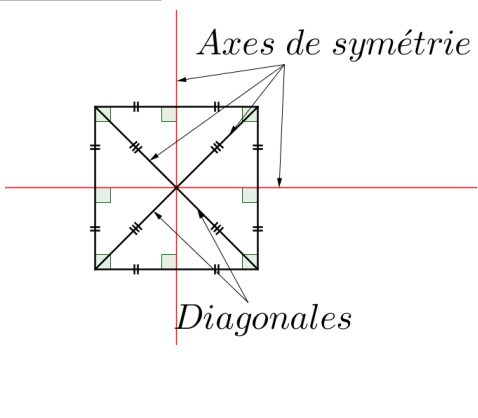
Proposition 9



5. Losange :

Proposition 10



6. Rectangle :**Proposition 11****7. Carré :****Proposition 12****8. Cercle :****Proposition 13**